

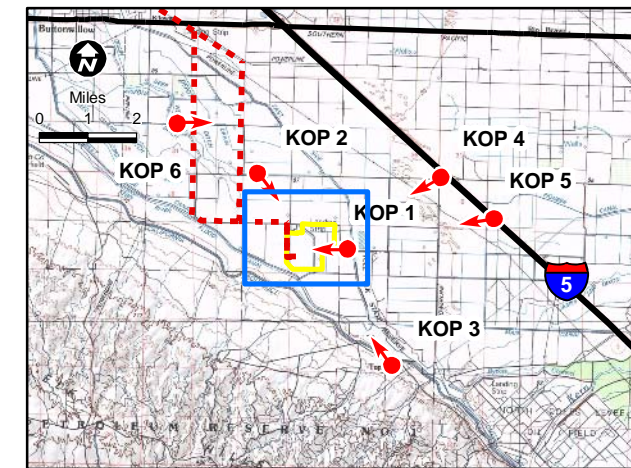
P:\ENV\PLANNING\Hydrogen Energy International LLC\HECA\Sim\layouts\heca layouts.incd



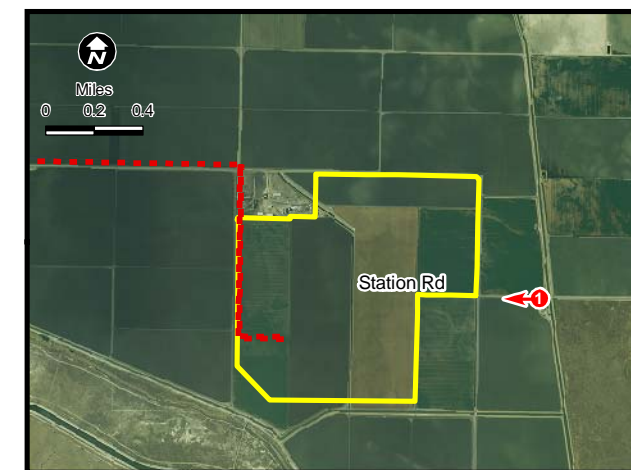
Photograph is intended to be viewed 10 inches from viewer's eyes when printed on 11x17 paper. The photograph below has been cropped top and bottom to show a wide angle of view with the above photograph's area shown in yellow.



5/21/09 vsa..T:\HECA\GRAPHICS\5.11 Visual\5.11-16\_K1S.ai



Area of enlarged map below



**Viewpoint Location Maps**

**Legend**

- - - - - Transmission Line Alternatives
- Project Boundary
- Key Observation Point

**Photograph Information**

Time of photograph:	12:14 P.M.
Date of photograph:	March 5, 2009
Distance to project:	0.71 mile
Weather condition:	Partly Cloudy
Viewing direction:	West
Latitude:	35°19'58.83"N
Longitude:	119°22'20.44"W

**KOP 1: VIEW FROM STATION ROAD  
SIMULATED CONDITIONS**

May 2009 Hydrogen Energy California (HECA)  
28067571 Kern County, California



**FIGURE 5.11-16**